

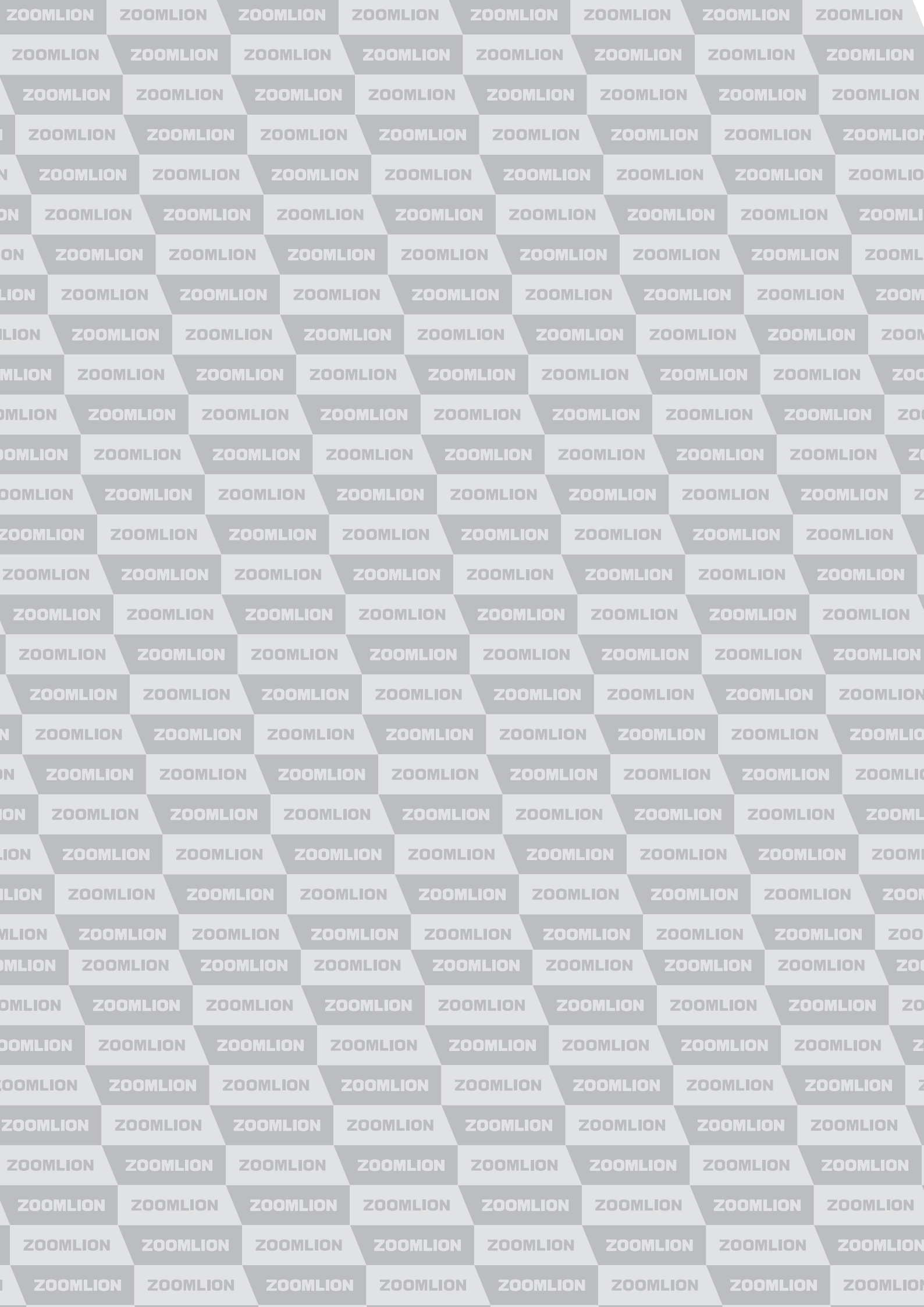
ZOOMLION

**VISION
CREATES FUTURE**

56X-6RZ

Truck-Mounted Concrete Pump

ZOOMLION



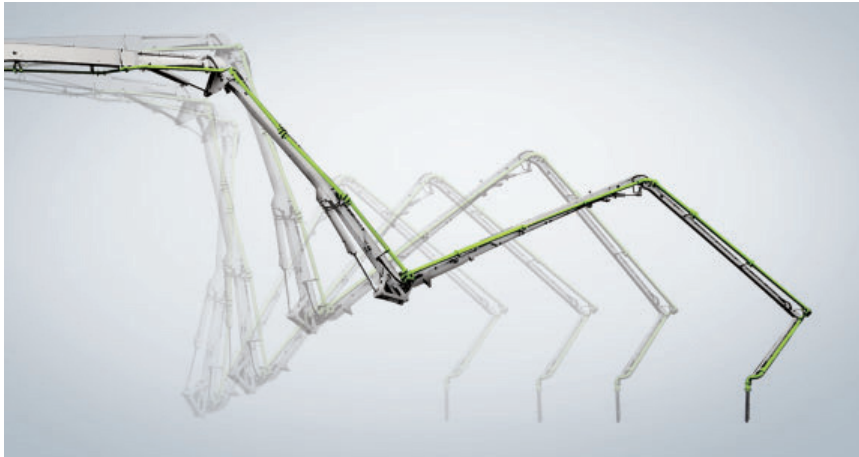


56X-6RZ

TRUCK-MOUNTED CONCRETE PUMP

Placing boom	K56-6RZ
Pumping unit	PU1811
Driven by	PTO Gearbox
Chassis	Cabover/Conventional

ZOOMLION | Industry First



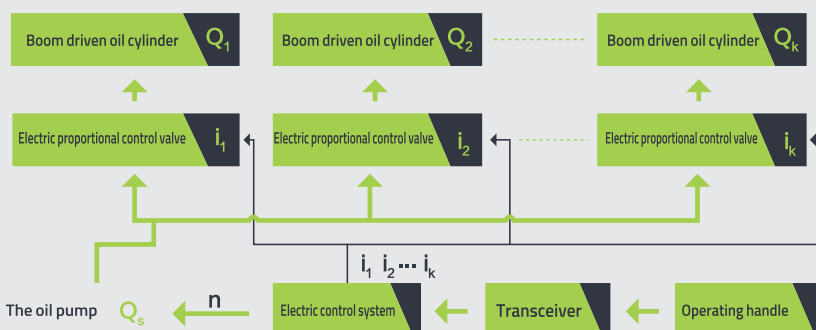
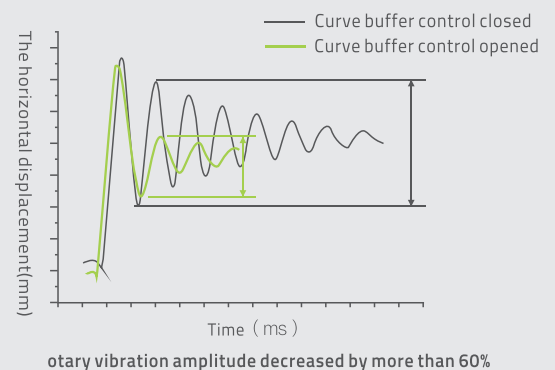
MBIT - The smartest arms

Zoomlion multi-boom intelligent technology is an industry leading, precise boom control technology. Reducing impacts during movement of boom and slewing device by controlling the volume flow of hydraulic oil. Zoomlion intelligent "brain" gives you a smooth and stable control of boom, which ensures your work done safely and precisely.

Active Boom Vibration Control Technology (ABC)

Zoomlion active boom vibration technology is an outstanding innovation, which decreases the vibration of boom enormously. 50-meter and above models are equipped with solenoid valves for damping absorption.

This technology has been tested in complex conditions to reduce the damping of boom by more than 60%. The displacement of boom end has been controlled within 0.4m.



Intelligent control - Your pumping expert at any time.

Curve-buffer control of boom - gentle start/stop.

Boom hydraulic oil flow automatic matching, oil pump speed automatic adjustment. Boom work more stable and energy-saving.

Auto fault diagnosis - computer keep monitoring any potential risks.





56X-6RZ

TRUCK-MOUNTED CONCRETE PUMP

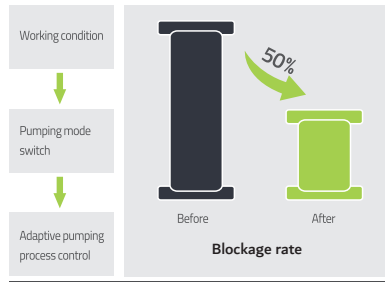
Placing boom	K56-6RZ
Pumping unit	PU1811
Driven by	PTO Gearbox
Chassis	Cabover/Conventional

ZOOMLION | Industry Innovation



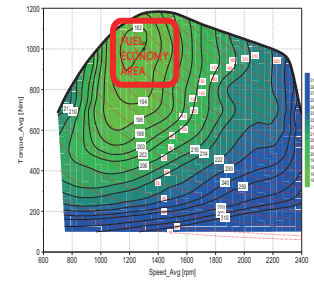
Stability

Boom intelligent damping technology: The soft control of booms in starting, slewing and stopping reduces the impacting vibration of booms, which gives the boom more stable operation.



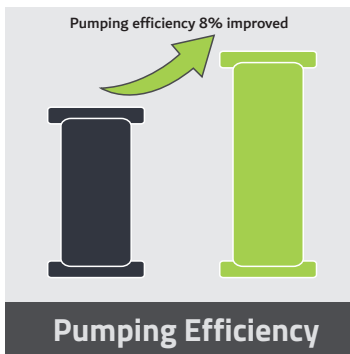
Pumping Performance

Adaptive Concrete Material Pumping Technology: Improved pumping control system for poor concrete with segregation and big viscosity, and auto-adaptive pumping mode, which reduces the blockage rate by more than 50%.



Fuel Economy

Adaptive Power Distribution Control Technology (APD): Automatically changing power mode according to pumping situation, the engine always work at economic oil consumption area that saves oil by 15% compared to other brands.



Pumping Efficiency

Accurate Pumping Control Technology (APC): An industry first, pumping control mode can be changed to match your working situation. Displacement sensor is used to detect and control the movement of pistons. The accuracy of each stroke can be controlled within 99.46%. This advantage cause the pump is more controllable, and pumping efficiency reached an unprecedented level.



Quality

ZOOMLION's experimental platform is a world leading platform, guarantees the high quality of ZOOMLION products. The boom structure has been tested no cracks for pumping 450,000 cubic meters concrete or after 8 years using. ZOOMLION's high quality products gives you confidence and safety at work.



Easy to do maintenance

Long life, cost-effective parts are designed to maximize its convenience for tear down and maintenance. Anti-wearing material is used at the wearing position of elbows. Double-layer pipes are used to hold the strong puming performance. These robust parts keep you running in a low-cost and convenient way.



ZOOMLION



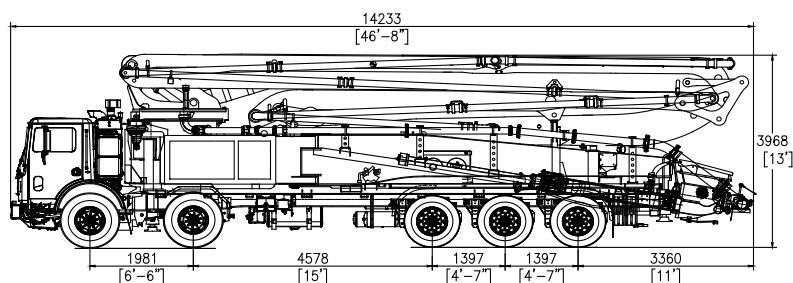
56X-6RZ

TRUCK-MOUNTED CONCRETE PUMP

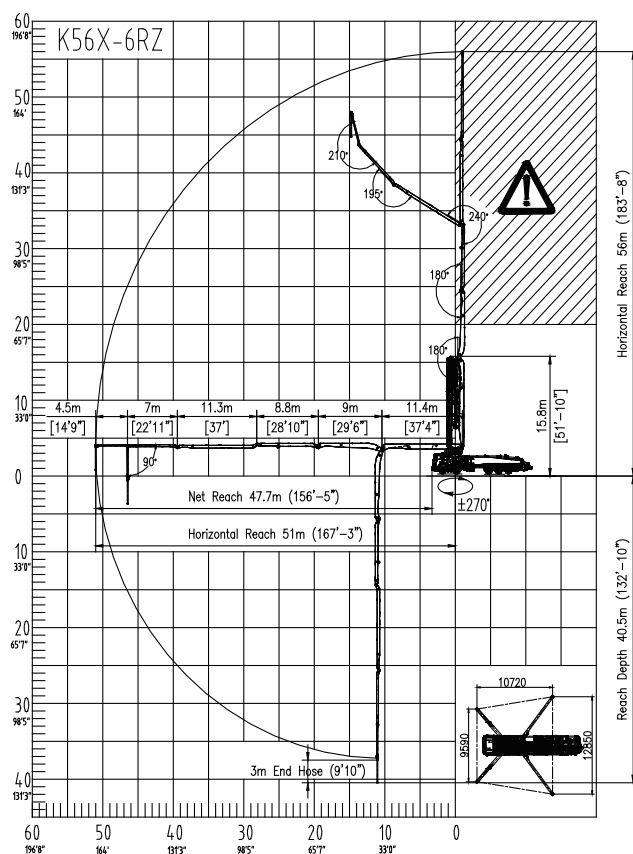
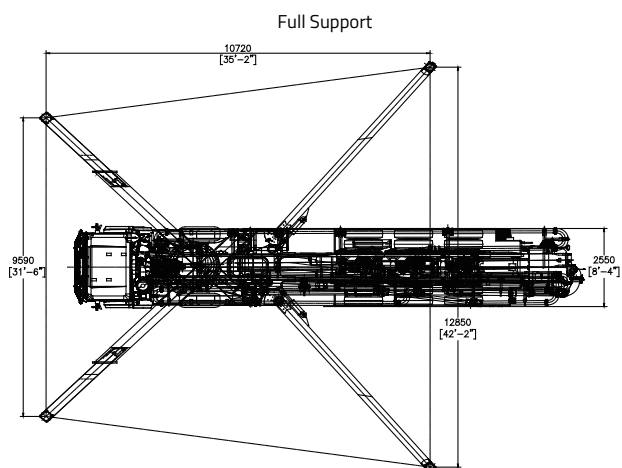
Placing boom	K56-6RZ
Pumping unit	PU1811
Driven by	PTO Gearbox
Chassis	Cabover/Conventional



Dimensions, Reach Information Diagram, Support



Dimensions varying according to truck assembly



Zoomlion Heavy Industry Science & Technology Co.,Ltd.

Add: No.677, Lugu Road, Zoomlion Industrial Park, Changsha, Hunan, China, 410205

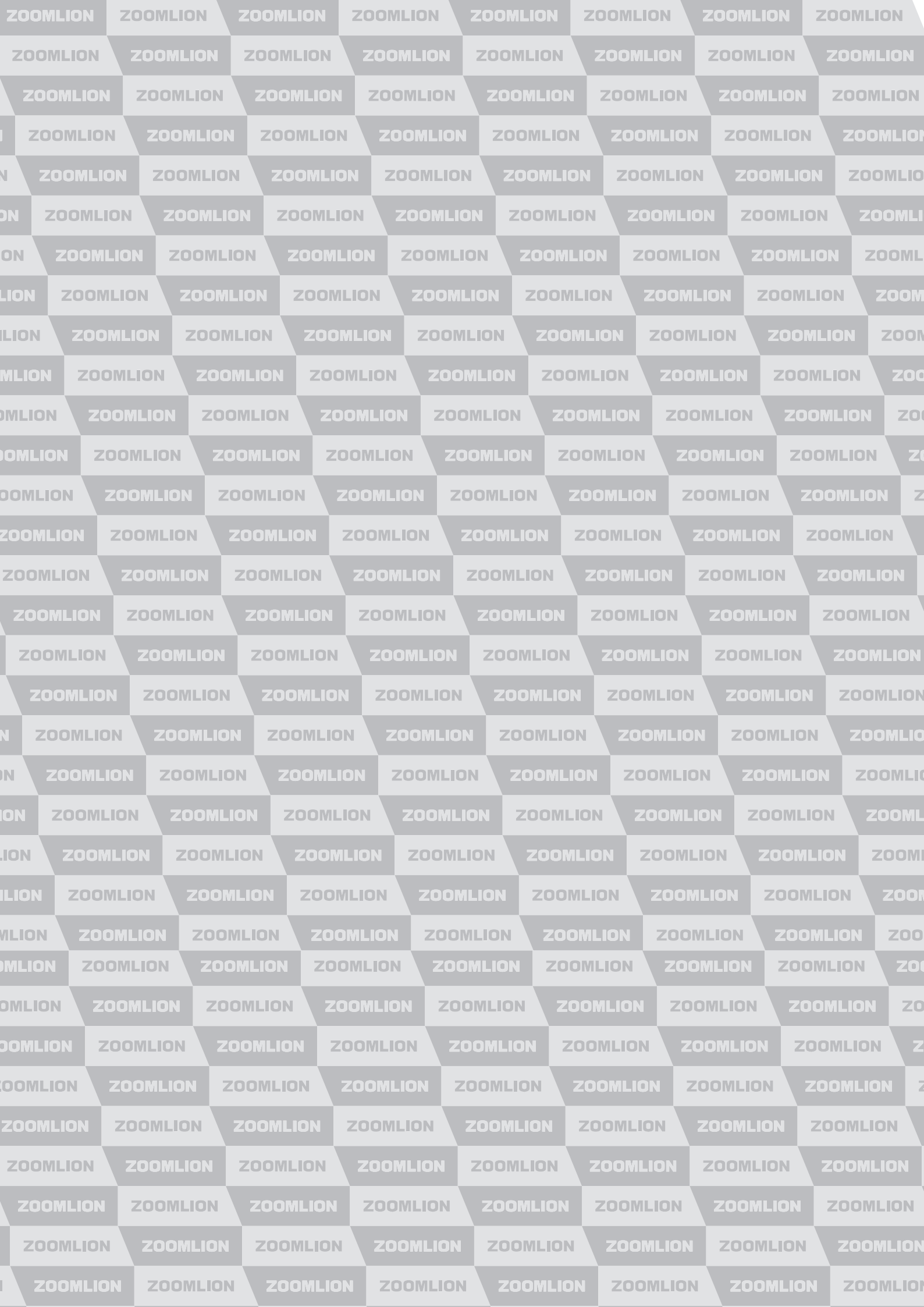
Copyright©2022 Zoomlion. All rights reserved. Reproduction and copying of any part of contents is not allowed for any purposes without Zoomlion's approval.



en.zoomlion.com

Placing boom	K56-6RZ
Pumping unit	PU1811
Driven by	PTO Gearbox
Chassis	Cabover/Conventional

en.zoomlion.com



ZOOMLION

Zoomlion Heavy Industry Science & Technology Co.,Ltd.

Add: No.677, Lugu Road, Zoomlion Industrial Park, Changsha, Hunan, China, 410205

Copyright©2022 Zoomlion. All rights reserved. Reproduction and copying of any part of contents is not allowed for any purposes without Zoomlion's approval.

