

**ECP38ZX****Four-section Z-FOLD****BOOM SPECIFICATION**

Folding type	4-section Z-folding
Max. vertical reach	123' (37.5m)
Max. horizontal reach	110' (33.5m)
Max. depth reach	83' (25.3m) (incl. End hose 3m)
Unfolding height	28'5" (8.7m)
Slewing angle	370deg.
End hose length	10' (3m)
Delivery pipe dia.	5" (125mm)

**PUMP SPECIFICATION**

Pump cell	2116
Control system	Closed Free Flow Hydraulic
Main pump	A4VG125x2
Concrete cylinder	9"x83" (230x2,100mm)
Strokes No.(per min.)	30
Concrete output*	210yd <sup>3</sup> /hr (160m <sup>3</sup> /h)
Concrete pressure*	1,233psi (85bar)
Transfer tube type	S-Tube, S2318 (Dia. 230-180mm)
Volume of hopper	158gal (600L)

\*Rod side. Ouput &amp; pressure are theoretical data.

**FEATURE**

Inductive proximity switch with indicator	Flushing water pump(30bar)	Twin wall pipe
Single lip concrete piston	Auto lubrication system for hopper	Working light on boom
Hard-chromed concrete cylinders	Tungsten carbide for wear ring and plate	Safety(OSS) system
Greasing port on boom link and pedestal	Flap elbow(180-150mm) with cleaning port	Safety device for hopper
Working light on pedestal	Agitator motors on both side hopper	Auxiliary fuel tank on one side rear outrigger
Aluminum platform(non-skid)	Working light on hopper	

**EVERDIGM HEAD OFFICE**

49, Buyeong-gil, Jincheon-eup, Jincheon-gun, Chungcheongbuk-do, Korea  
**Tel** +82-43-530-3300 **Fax** +82-43-530-3429

**EVERDIGM AMERICA**

655 West Lytell Street, Metter, Georgia 30439, USA  
 E-mail: everdigmamerica@everdigm.com  
**Tel** +1-912-685-5099

**CPE AMERICA**

655 West Lytell Street, Metter, GA 30439, USA  
 www.cpeamerica.com  
 sebastian@cpeamerica.com  
 tony@cpeamerica.com  
**Tel** +1-912-685-5200

**Authorized distributor of  
 EVERDIGM Concrete Pumps**





# ECP38ZX

Four-section Z-FOLD

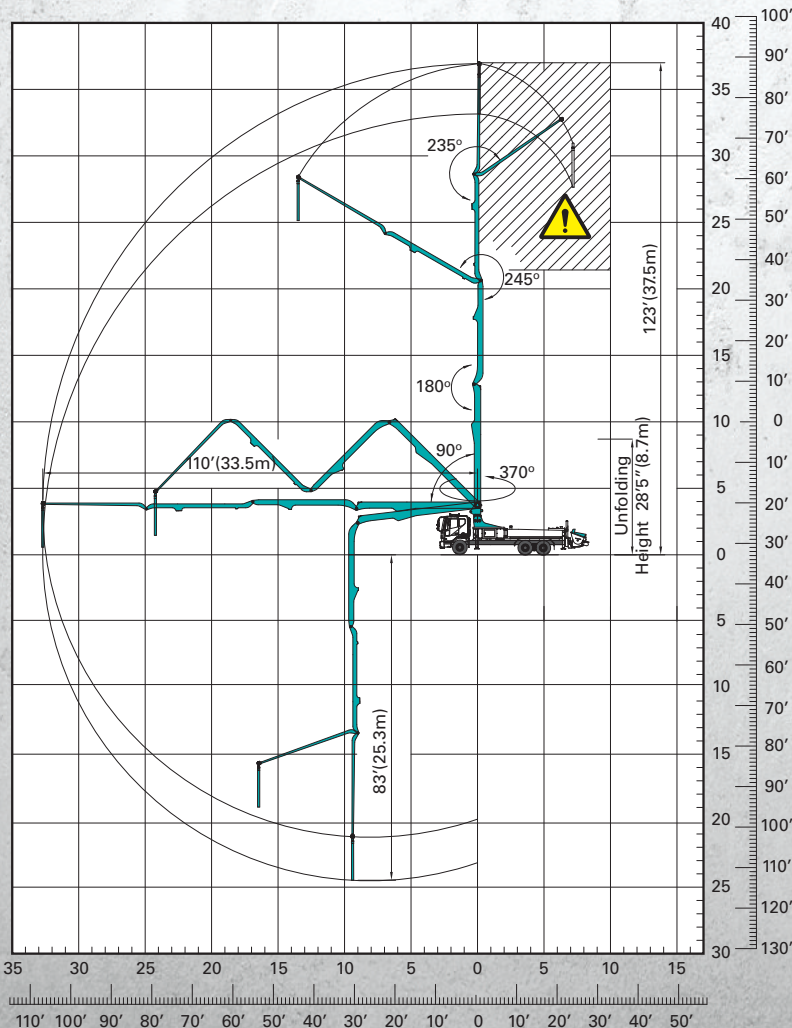
www.everdigm-america.com

**TOTAL WEIGHT= 56,769 lbs (25,750kg)**

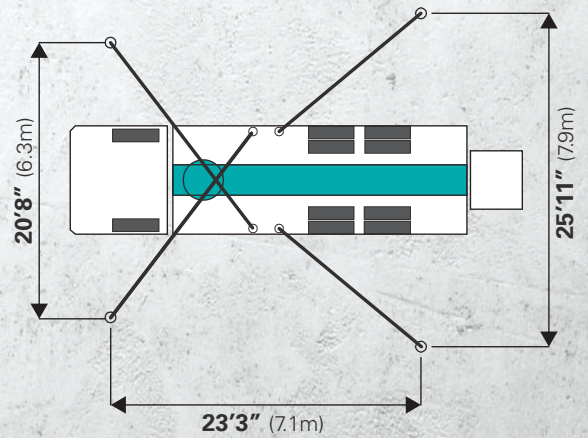


Based on Model MACK MRU 613 with 2116 pump cell. Dimensions will vary with different truck makes, models and specifications. Weights are approximate and include pump, boom, truck, driver and some fuel. Varies with options selected.

## WORKING RANGE



## OUTRIGGER SPREAD



Front outrigger type X(Diagonal) Extension  
Rear outrigger type Swing-out

