

ECP33ZX-5

Five-section Z-FOLD



BOOM SPECIFICATION

Folding type	5-section Z-folding
Max. vertical reach	106' (32.3m)
Max. horizontal reach	93'5" (28.5m)
Max. depth reach	67'3" (20.5m) (incl. End hose 3m)
Unfolding height	19'4" (5.9m)
Slewing angle	360deg.
End hose length	10' (3m)
Delivery pipe dia.	5" (125mm)

PUMP SPECIFICATION

Pump cell	2116
Control system	Closed Free Flow Hydraulic
Main pump	A4VG125x2
Concrete cylinder	9" x 82'6" (230 x 2,100mm)
Strokes No.(per min.)	30
Concrete output*	209yd ³ /hr (160m ³ /h)
Concrete pressure*	1,233psi (85bar)
Transfer tube type	S-Tube,S2018 (Dia. 230-180mm)
Volume of hopper	158gal (600L)

*Rod side. Ouput & pressure are theoretical data.

FEATURE

Inductive proximity switch with indicator	Flushing water pump(30bar)	Twin wall pipe
Single lip concrete piston	Auto lubrication system for hopper	Working light on boom
Hard-chromed concrete cylinders	Tungsten carbide for wear ring and plate	Safety(OSS) system
Greasing port on boom link and pedestal	Flap elbow(180-150mm) with cleaning port	Safety device for hopper
Working light on pedestal	Agitator motors on both side hopper	
Aluminum platform(non-skid)	Working light on hopper	

EVERDIGM HEAD OFFICE

49, Buyeong-gil, Jincheon-eup, Jincheon-gun, Chungcheongbuk-do, Korea
Tel +82-43-530-3300 **Fax** +82-43-530-3429

EVERDIGM AMERICA

655 West Lytell Street, Metter, Georgia 30439, USA
 E-mail: everdigmamerica@everdigm.com
Tel +1-912-685-5099

CPE AMERICA

655 West Lytell Street, Metter, GA 30439, USA
 www.cpeamerica.com
 sebastian@cpeamerica.com
 tony@cpeamerica.com
Tel +1-912-685-5200

Authorized distributor of
EVERDIGM Concrete Pumps



ECP33ZX-5

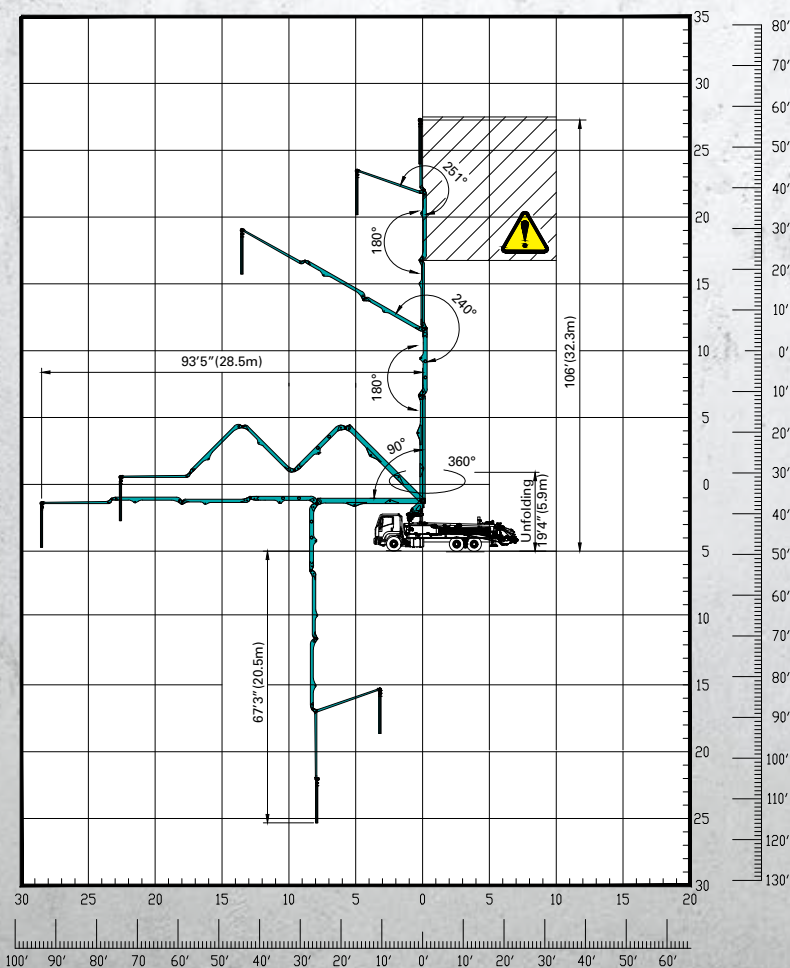
Five-section Z-FOLD

TOTAL WEIGHT= 52,280 lbs (23,713kg)

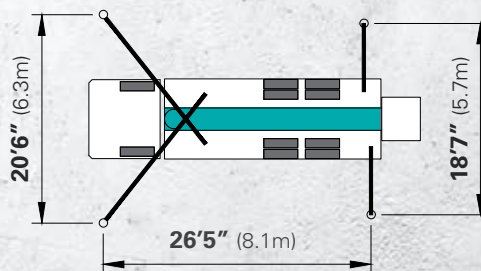


Based on Model MACK MRU 613 with 2116 pump cell. Dimensions will vary with different truck makes, models and specifications. Weights are approximate and include pump, boom, truck, driver and some fuel. Varies with options selected.

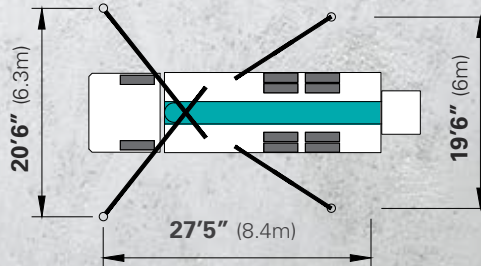
WORKING RANGE



OUTRIGGER SPREAD



Front outrigger type X(Diagonal) Extension
Rear outrigger type Telescopic type



Front outrigger type X(Diagonal) Extension
Rear outrigger type Swing-out



⚠ Don't use in caution area